

E-MAIL ENCRYPTION SERVICE

SERVICE

version: 1.1

GUARANTEES PROTECTED E-MAIL-COMMUNICATION – TOTALLY AUTOMATIC!

The antispameurope E-Mail Encryption Service signs and encrypts outgoing e-mails and decrypts incoming e-mails automatically and transparently without interferences from user. E-mails are thus reliably protected against unauthorized disclosure and tampering.



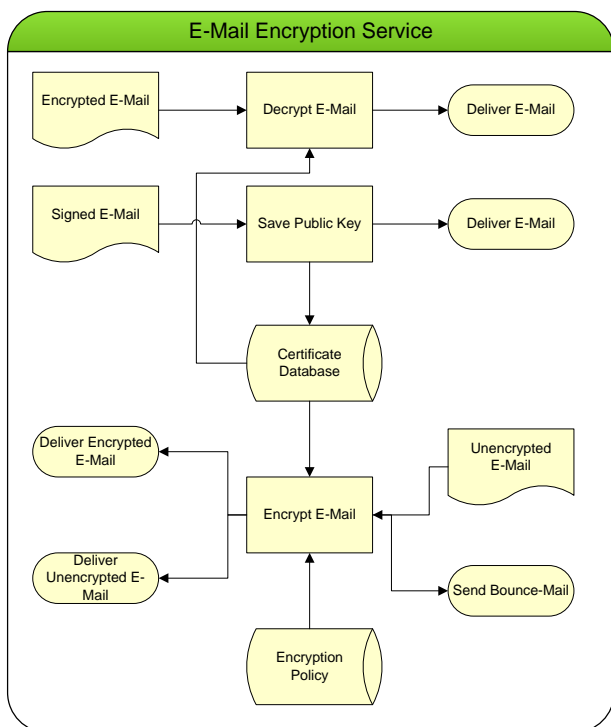
So far it is expensive and complicated for enterprises, to protect outgoing business mails against unauthorized disclosure and fraud. First of all, installation and application of certificates is cumbersome, signatures must be individually submitted, issued and installed for each user. The highly complex certificate management for e-mail signatures cost enterprises much time and money.

The solution: The automatic E-Mail Encryption Service of antispameurope. The service encrypts outgoing e-mails in the e-mail gateway of antispameurope using the public key of the e-mail recipient. Whether outgoing e-mails should be encrypted and how to proceed in case of missing keys, can be

defined by your administrator using a policy. The necessary public keys of the recipient for the encryption are automatically extracted and stored from signed e-mails. Incoming encrypted e-mails are again automatically decrypted by the Gateway. This decryption is displayed in the e-mail header. In addition, all outgoing e-mails can be automatically signed. This is also defined in the policy using the web based antispameurope Control Panel.

The encryption service takes care of the complete certificate management. Encryption, decryption and signature occur automatically and transparently without further interferences from user. Incoming and outgoing e-mails are thus not only protected against unauthorized disclosure but also reliably protected against tampering.

Each user gets a signature of his own – without any additional efforts such as installations or maintenance for the user and thus at minimum internal costs. The encryption service can be used with all popular e-mail servers and clients. The only prerequisite is the use of the Spam filter service with Mail-Relay.



Characteristics – Summary

- Fully automatic encryption and signing of outgoing e-mails using S/MIME
- User-specific certificates
- Certificate management and handling by antispameurope, without user or admin effort
- Adjustable policies
- Web-interface for administrative functions and policy adjustments
- Central management by antispameurope, 24/7 monitoring
- No software, no hardware, no maintenance
- Fixed calculable costs
- Full 24/7 e-mail and phone support
- Operates in redundant, secure provider computer centers